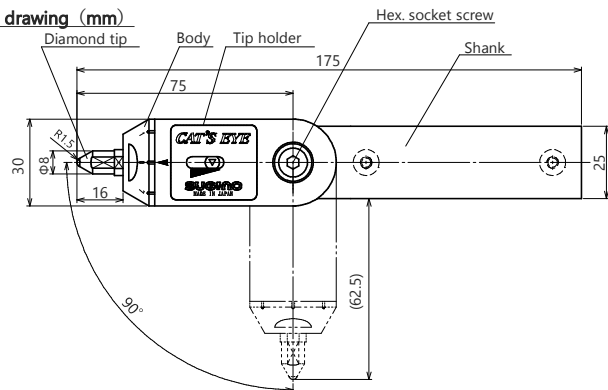


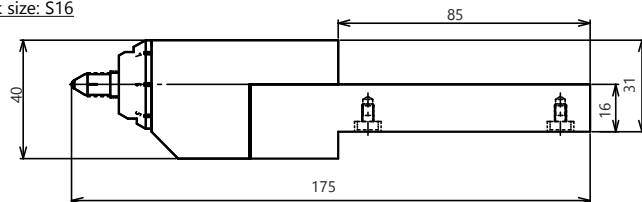
Diamond-tool Type

CAT'S EYE CEO-AJ (Tool angle adjustable type) Dimensional specification

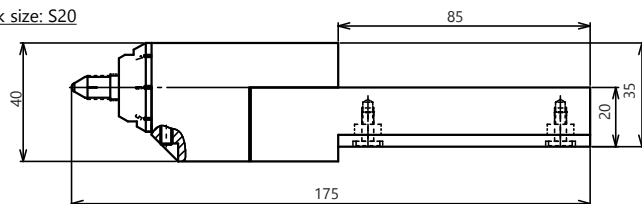
Dimensional drawing (mm)



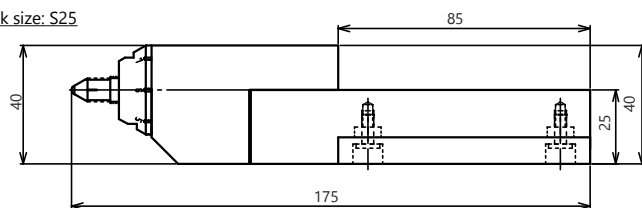
Shank size: S16



Shank size: S20



Shank size: S25

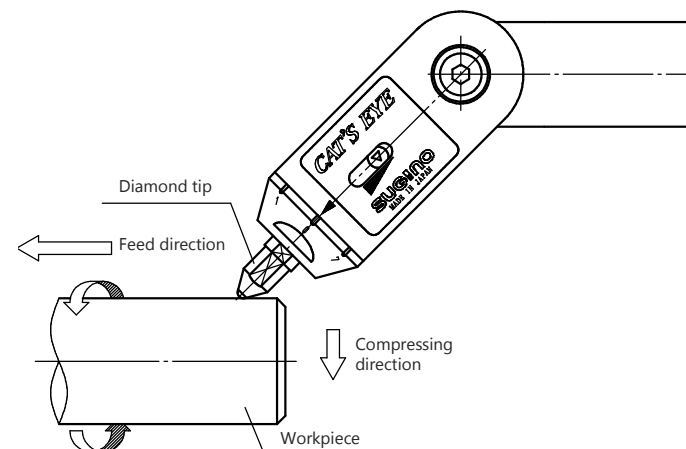


Representative tool specification

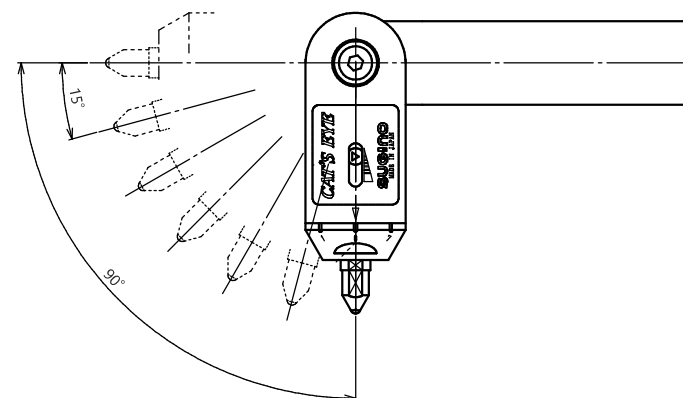
Tool model	Shank size
CEO-DR1.5B-S16AJ	□16
CEO-DR1.5B-S20AJ	□20
CEO-DR1.5B-S25AJ	□25

* Other Shank specification is also available.

Installation image on NC lathe



Tool angle adjusting image



* Tool angle can be adjustable in the range of $\pm 90^\circ$ in 15° .

Burnishing conditions (Reference)

Workpiece hardness (HRC)	Material	Peripheral speed (m/min)	Feed rate (mm/rev)	Spring pre-load (N)	Spring
45	Alloy steel	50 - 100	0.05	30 - 50	Spring(Red)
60				150 - 200	Spring(Brown)

* Burnishing conditions are reference only, and do not guarantee that they will achieve the customers' required values.

* Actual burnishing conditions vary depending on the material and conditions before burnishing, so these values should be used as a reference.